

REAL ESTATE AUCTION – 302 FIRESIDE DR., CAMP HILL, PA – July 30th - Noon



FRONT



FRONT

ENSMINGER AUCTIONEERS – Since 1836 – PA Lic.#RY-160-L – 717-652-4111

REAL ESTATE AUCTION – 302 FIRESIDE DR., CAMP HILL, PA – July 30th - Noon



REAR



PATIO & REAR YARD

ENSMINGER AUCTIONEERS – Since 1836 – PA Lic.#RY-160-L – 717-652-4111

REAL ESTATE AUCTION – 302 FIRESIDE DR., CAMP HILL, PA – July 30th - Noon



REAR YARD



REAR YARD

ENSMINGER AUCTIONEERS – Since 1836 – PA Lic.#RY-160-L – 717-652-4111

REAL ESTATE AUCTION – 302 FIRESIDE DR., CAMP HILL, PA – July 30th - Noon



LIVING ROOM – 13' X 25'4"



DINING ROOM – 13' X 11'6"

ENSMINGER AUCTIONEERS – Since 1836 – PA Lic.#RY-160-L – 717-652-4111

REAL ESTATE AUCTION – 302 FIRESIDE DR., CAMP HILL, PA – July 30th - Noon



KITCHEN – 13' X 12'10"



KITCHEN

ENSMINGER AUCTIONEERS – Since 1836 – PA Lic. #RY-160-L – 717-652-4111

REAL ESTATE AUCTION – 302 FIRESIDE DR., CAMP HILL, PA – July 30th - Noon

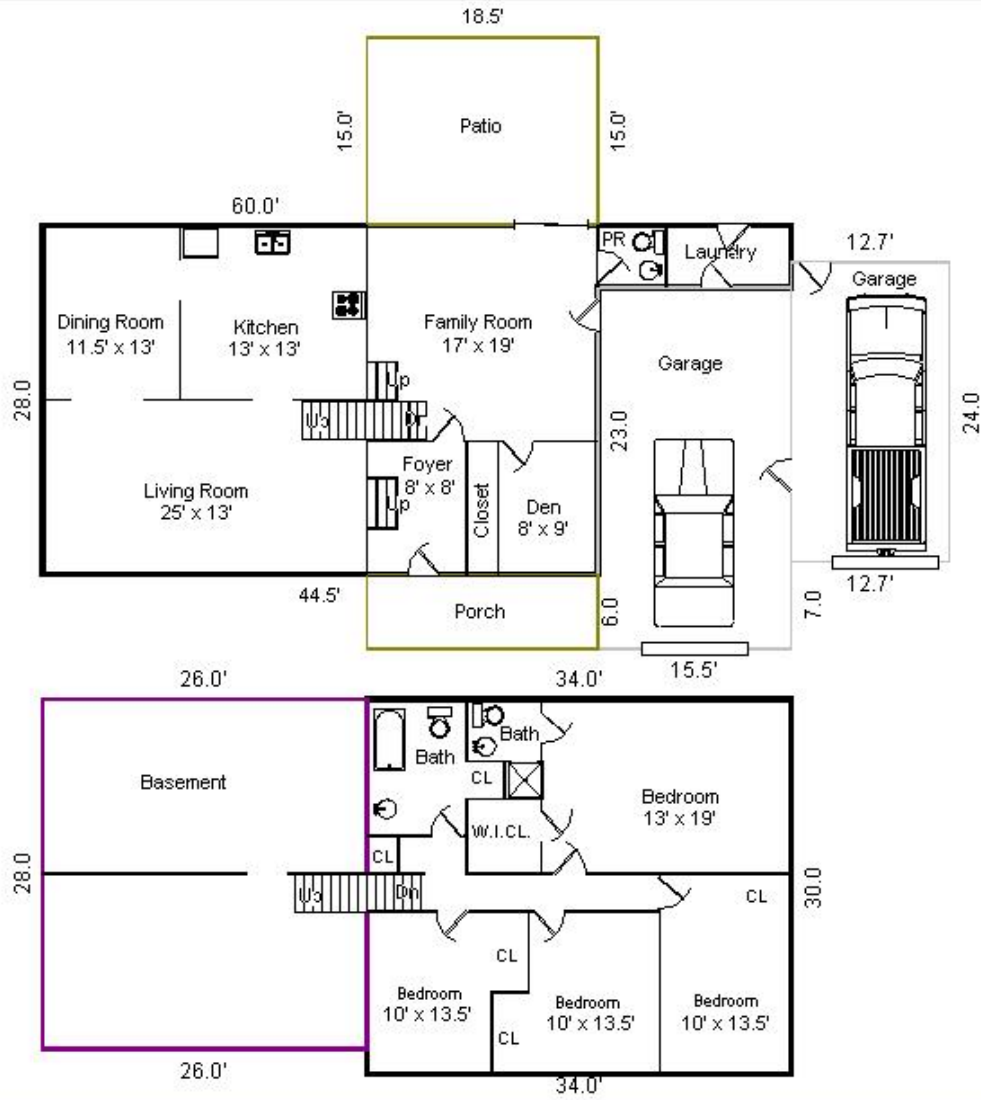


FAMILY ROOM – 16'9" X 18'10"



MASTER BEDROOM – 13'4" X 18'9"

ENSMINGER AUCTIONEERS – Since 1836 – PA Lic.#RY-160-L – 717-652-4111



FLOOR PLAN SHOWING APPROXIMATE DIMENSIONS AND ROOM SIZES. The house contains 2,344 square feet of gross living area as measured from the outside walls